



3 Cornell Square, London
SW8

GARTON JONES.COM



3 Cornell Square, London , SW8

GARTON JONES.COM

9 Albert
Embankment
London
SE1 7SP

Sales +44 (0) 20 7735 1888
nineelms@gartonjones.com
www.gartonjones.com

£669 Per Week

A 2 bedroom apartment offering 726sq.ft (67.43sq.m) available to rent on the 7th floor of 3 Cornell Square, a residential gated development a short walk from Nine Elms Tube Station. This furnished property benefits from an open plan reception room and kitchen with access to a balcony enjoying views of the Shard and towards the City and Canary Wharf. Additionally, there is good storage with built in wardrobes to the master bedroom, 2 bathrooms (1 en-suite), and a video entry phone system.

Residents at Cornell Square benefit from a 24-hour concierge service, and also has an on-site Tesco Extra and Pure Gym and is also within easy reach of a good selection of other local amenities. There is a regular bus service on the door step and the rail/tube links of Vauxhall are within easy reach.

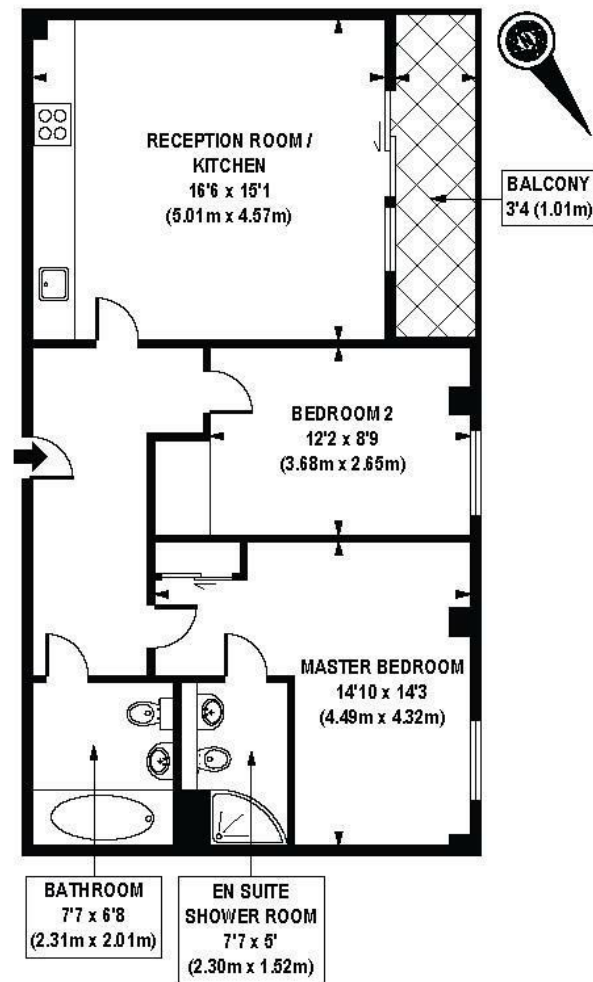
Please note furniture may differ to that shown in the current photos.

- Electricity Supply — Mains | Water Supply — Mains | Sewerage — Mains | Heating — Electric Underfloor Heating
- Broadband & Mobile Signal : Check Coverage via Ofcom
- Parking: No Parking
- Lift Access
- Building Safety: EWS1 Available on Request
- Council Tax Band E (London Borough of Lambeth)
- 5 Week Security Deposit
- Holding deposit equivalent to 1 week of rent
- Rent to be payable monthly in advance
- EPC Rating C (73)

EPC certificate available on request.

- 2 Bedrooms
- 726sq.ft (67.43sq.m)
- 7th Floor (with lift)
- 2 Bathrooms (1 En-Suite)
- Open Plan Reception
- Balcony
- 24 Hour Concierge
- Gated Development
- Close to Station





SEVENTH FLOOR

APPROX. GROSS INTERNAL FLOOR AREA 726 sq. ft / 67.43 sq. m

